

Randwick City Council
12 April 2018
Records Received

A	16.09.16	Development Application	CV	CP
Revision	Date	Description	Initial	Checked

Project

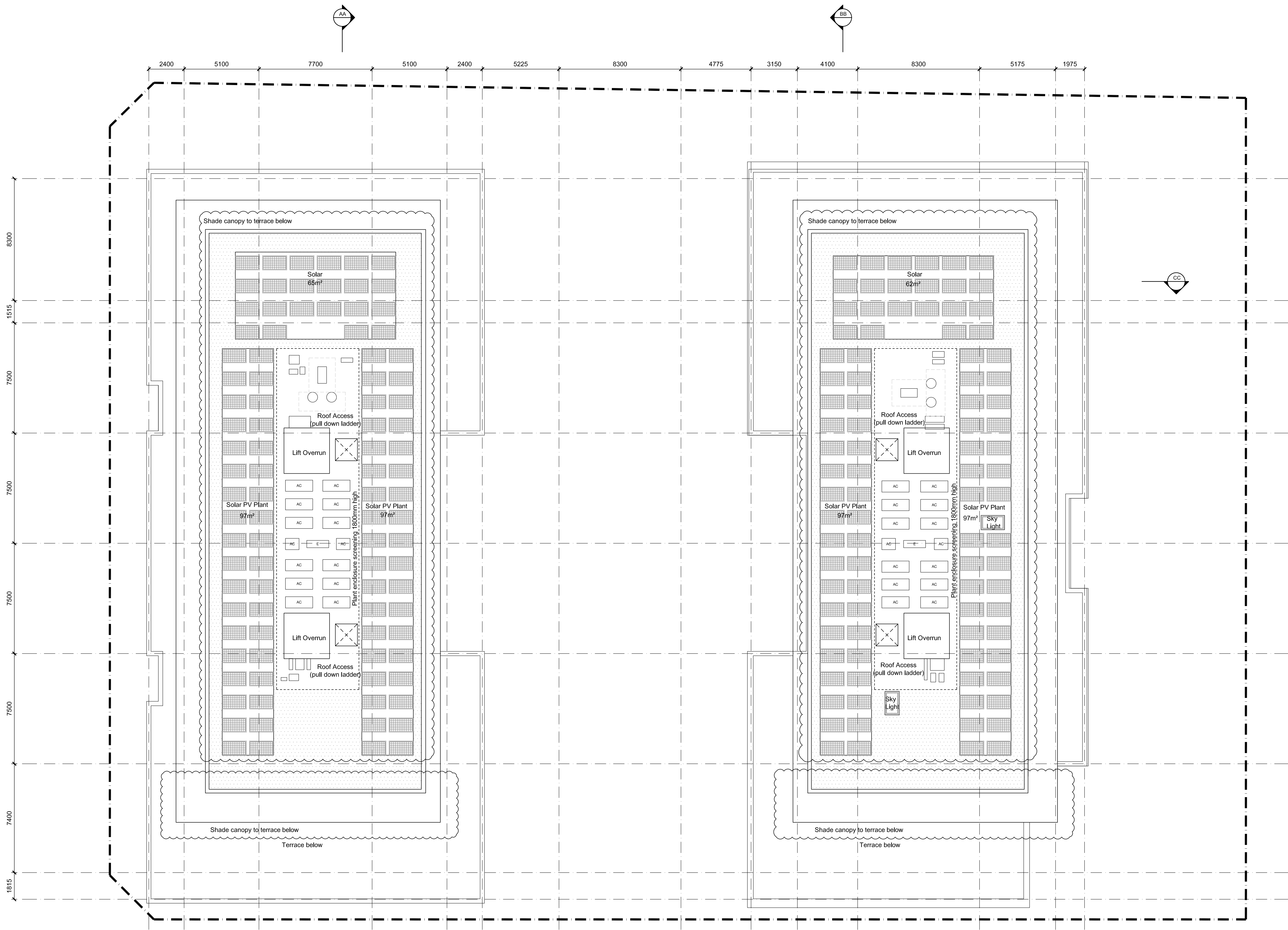
Sydney 43 Brisbane Street
Surry Hills NSW 2010 Australia
T 02 8354 5100 F 02 8354 5199
<http://www.batesSMART.com.au>

Bates Smart Architects Pty Ltd ABN 68 094 740 986

Key Plan
Level 7

Drawing No. [Revision]

DA.E1.02.107[D]



Check all dimensions and site conditions prior to commencement of any work, the purchase or ordering of any materials, fittings, plant, services or equipment and the preparation of shop drawings and/or the fabrication of any components.

All drawings to be read in conjunction with all architectural documents and all other consultants documents.

Do not scale drawings - refer to figured dimensions only. Any discrepancies shall immediately be referred to the architect for clarification.

All drawings may not be reproduced or distributed without prior permission from the architect.

SECTION 96

DEVELOPMENT APPLICATION

DA/664/2016/A

Randwick City Council

12 April 2018

Records Received

D	30.10.17	Section 96 issue	CV	KB
C	26.05.17	Development Application	CV	KB
B	19.04.17	DEP drawing issue	CV	KB
A	16.09.16	Development Application	CV	CP
Revision	Date	Description	Initial	Checked

Project

BATESSMART

Melbourne 1 Nicholson Street
Melbourne VIC 3000 Australia
T 03 8664 6200 F 03 8664 6300
http://www.batesmart.com.au

Sydney 43 Brisbane Street
Surry Hills NSW 2010 Australia
T 02 8354 5100 F 02 8354 5199
http://www.batesmart.com.au

Bates Smart Architects Pty Ltd ABN 68 094 740 986

Lot E1, Newmarket Green
Barker Street Randwick NSW

Key Plan
Roof Plan

Scale	1:125@A1, 1:250@A3		
Drawn	CV	Checked	CP
Project No.	S11950.b		
Status	DA Issue		
Plot Date	31/10/2017 10:41 AM		
Plot File	S:\11900-11999\11950_b_cbus_e1\70_CAD\Plots\DA\DA.E1.02... ...108[D].dwg		
Drawing No.	[Revision]		

DA.E1.02.108[D]

Check all dimensions and site conditions prior to commencement of any work, the purchase or ordering of any materials, fittings, plant, services or equipment and the preparation of shop drawings and/or the fabrication of any components.

All drawings to be read in conjunction with all architectural documents and all other consultants documents.

Do not scale drawings - refer to figured dimensions only. Any discrepancies shall immediately be referred to the architect for clarification.

All drawings may not be reproduced or distributed without prior permission from the architect.

MATERIAL LEGEND

- BP Palisade Balustrade
- BPa Palisade Balustrade (L post)
- BG Glass Balustrade
- CO Precast Concrete
- GB Colourback glazing (fire-rated wall behind)
- GC Clear Glazing(Fixed)
- GO Operable Glazing
- GL Louvred Glazing
- GW Casement Window
- LV Fixed vertical aluminium louvres
- MA Aluminium awnings
- MC Bronze coloured cladding
- MP Warm Grey coloured metal panelling
- MC2 Perforated bronze coloured metal panelling

SECTION 96 DEVELOPMENT APPLICATION DA/664/2016/A

Randwick City Council
12 April 2018
Records Received



1 Barker Street Elevation
North 1:125



2 Young Street Elevation
E1.1 West 1:125

E	30.10.17	Section 96 issue	CV	KB
D	11.08.17	Development Application	CV	KB
C	28.05.17	Development Application	CV	KB
B	19.04.17	DEP drawing issue	CV	KB
A	16.09.16	Development Application	CV	CP
Revision	Date	Description	Initial	Checked

Project

BATESSMART

Melbourne 1 Nicholson Street
Melbourne VIC 3000 Australia
T 03 8664 6200 F 03 8664 6300
http://www.batesmart.com.au

Sydney 43 Brisbane Street
Surry Hills NSW 2010 Australia
T 02 8354 5100 F 02 8354 5199
http://www.batesmart.com.au

Bates Smart Architects Pty Ltd ABN 68 094 740 986

Lot E1, Newmarket Green
Barker Street Randwick NSW

Elevations
North and West



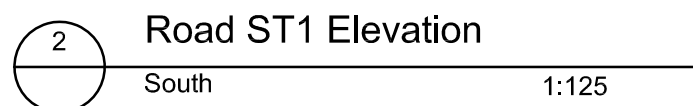
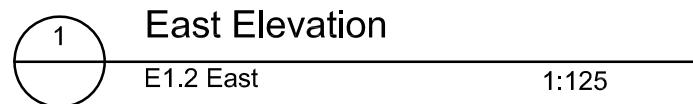
Scale	1:125@A1, 1:250@A3
Drawn	CV
Checked	CP
Project No.	S11950.b
Status	DA Issue
Plot Date	31/10/2017 10:41 AM
Plot File	S:\11900-11999\11950_b_chus_e1170_CAD\Plots\DA\DA.E1.07...
Drawing No.	[Revision]

DA.E1.07.001[E]

All drawings may not be reproduced or distributed without prior permission from the architect.

BP	Palisade Balustrade
BPa	Palisade Balustrade (L post)
CG	Glass Balustrade
CO	Precast Concrete
GB	Colourback glazing (fire-rated wall behind)
GC	Clear Glazing(Fixed)
GO	Operable Glazing
GL	Louvréd Glazing
GW	Casement Window
LV	Fixed vertical aluminium louvers
MA	Aluminium awnings
MC	Bronze coloured cladding
MP	Warm Grey coloured metal panelling
MC2	Perforated bronze coloured metal panelling

Randwick City Council
12 April 2018
Records Received

Project

Bates Smart Architects Pty Ltd ABN 68 094 740 986

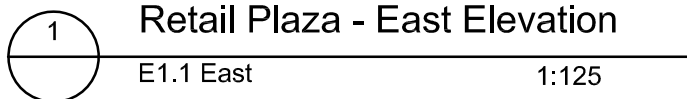
Scale	1:125@A1, 1:250@A3		
Drawn	CV	Checked	CP
Project No.	S11950.b		
Status	DA Issue		
Plot Date	3/10/2017 10:41 AM		
Plot File	S:\11900-11999es\11950.b_cbus_e\170_CAD\Plots\DA\DA1.E07...002[E].dwg		
Drawing No.	[Revision]		

DA.E1.07.002[E]

All drawings may not be reproduced or distributed without prior permission from the architect.

BP	Palisade Balustrade
BPa	Palisade Balustrade (L post)
BG	Glass Balustrade
CO	Precast Concrete
GC	Colourback glazing (fire-rated wall behind)
GB	Clear Glazing(Fixed)
GO	Operable Glazing
GL	Louved Glazing
GW	Casement Window
LV	Fixed vertical aluminium louvers
MA	Aluminium awnings
MC	Bronze coloured cladding
MP	Warm Grey coloured metal panelling
MC2	Perforated bronze coloured metal panelling

Randwick City Council
12 April 2018
Records Received

Project

Bates Smart Architects Pty Ltd ABN 68 094 740 986

Scale	1:125@A1, 1:250@A3		
Drawn	CV	Checked	CP
Project No.	S11950.b		
Status	DA Issue		
Plot Date	31/10/2017 10:41 AM		
Plot File	S:\11900-11999\11950.b_cbus_a\170_CAD\Plots\DA\DA.1 E.07..._003[E].dwg		
Drawing No.	[Revision]		

DA.E1.07.003[E]

Check all dimensions and site conditions prior to commencement of any work, the purchase or ordering of any materials, fittings, plant, services or equipment and the preparation of shop drawings and/or the fabrication of any components.

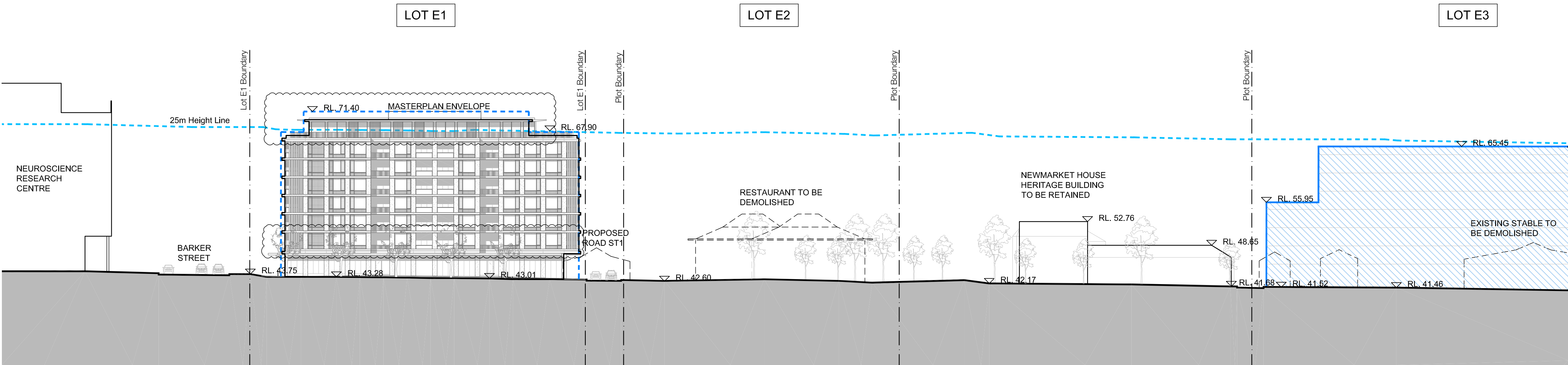
All drawings to be read in conjunction with all architectural documents and all other consultants documents.

Do not scale drawings - refer to figured dimensions only. Any discrepancies shall immediately be referred to the architect for clarification.

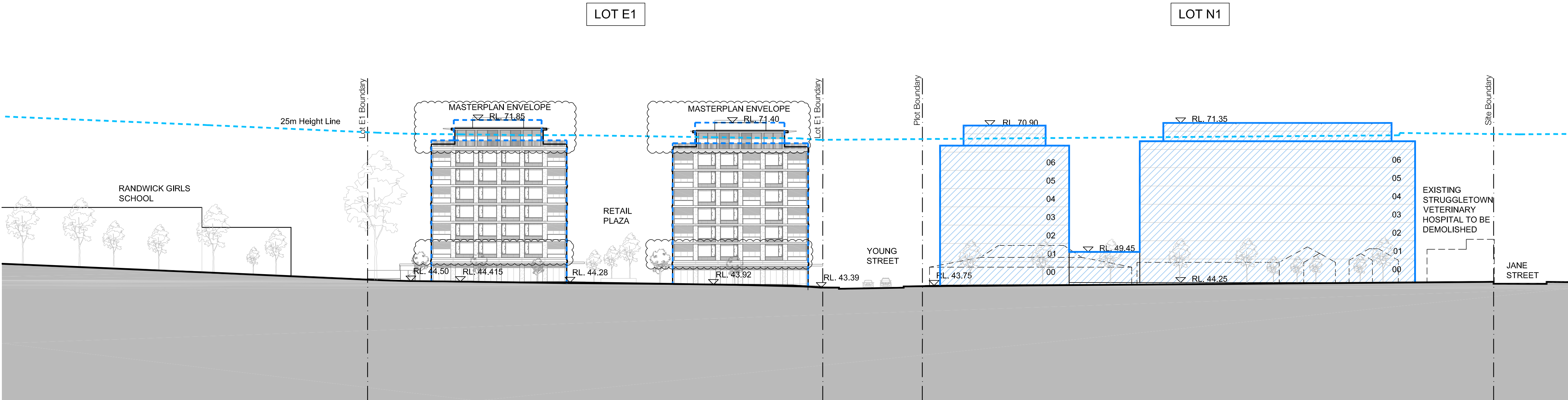
All drawings may not be reproduced or distributed without prior permission from the architect.

LEGEND

----- Existing buildings to be demolished under Stage 1 Masterplan



1 Young St - Streetscape Elevation
West 1:400



2 Barker Street - Streetscape Elevation
North 1:400

SECTION 96
DEVELOPMENT APPLICATION
DA/664/2016/A
Randwick City Council
12 April 2018
Records Received

D	30.10.17	Section 96 issue	CV	KB
C	28.05.17	Development Application	CV	KB
B	19.04.17	DEP drawing issue	CV	KB
A	16.09.16	Development Application	CV	CP
Revision Date		Description	Initial	Checked
Project				

BATESSMART

Melbourne 1 Nicholson Street
Melbourne VIC 3000 Australia
T 03 8664 6200 F 03 8664 6300
http://www.batesmart.com.au

Sydney 43 Brisbane Street
Surry Hills NSW 2010 Australia
T 02 8354 5100 F 02 8354 5199
http://www.batesmart.com.au

Bates Smart Architects Pty Ltd ABN 68 094 740 986

Lot E1, Newmarket Green
Barker Street Randwick NSW

Elevations Streetscape	
Scale	1:400@A1, 1:800@A3
Drawn	CV Checked CP
Project No.	S11950.b
Status	DA Issue
Plot Date	31/10/2017 10:41 AM
Plot File	S:\11900-11999\11950_b_cbus_e1\70_CAD\Plots\DA\DA.E1.07... ..._010[D].dwg
Drawing No.	[Revision]

DA.E1.07.010[D]

Check all dimensions and site conditions prior to commencement of any work, the purchase or ordering of any materials, fittings, plant, services or equipment and the preparation of shop drawings and/or the fabrication of any components.

All drawings to be read in conjunction with all architectural documents and all other consultants documents.

Do not scale drawings - refer to figured dimensions only. Any discrepancies shall immediately be referred to the architect for clarification.

All drawings may not be reproduced or distributed without prior permission from the architect.

SECTION 96
DEVELOPMENT APPLICATION
DA/664/2016/A
Randwick City Council
12 April 2018
Records Received

E	30.10.17	Section 96 issue	CV	KB
D	11.08.17	Development Application	CV	KB
C	28.05.17	Development Application	CV	KB
B	19.04.17	DEP drawing issue	CV	KB
A	16.09.16	Development Application	CV	CP
Revision		Date	Description	Initial
Project		Checked		

BATESSMART

Melbourne 1 Nicholson Street
Melbourne VIC 3000 Australia
T 03 8664 6200 F 03 8664 6300
http://www.batesSMART.com.au

Sydney 43 Brisbane Street
Surry Hills NSW 2010 Australia
T 02 8354 5100 F 02 8354 5199
http://www.batesSMART.com.au

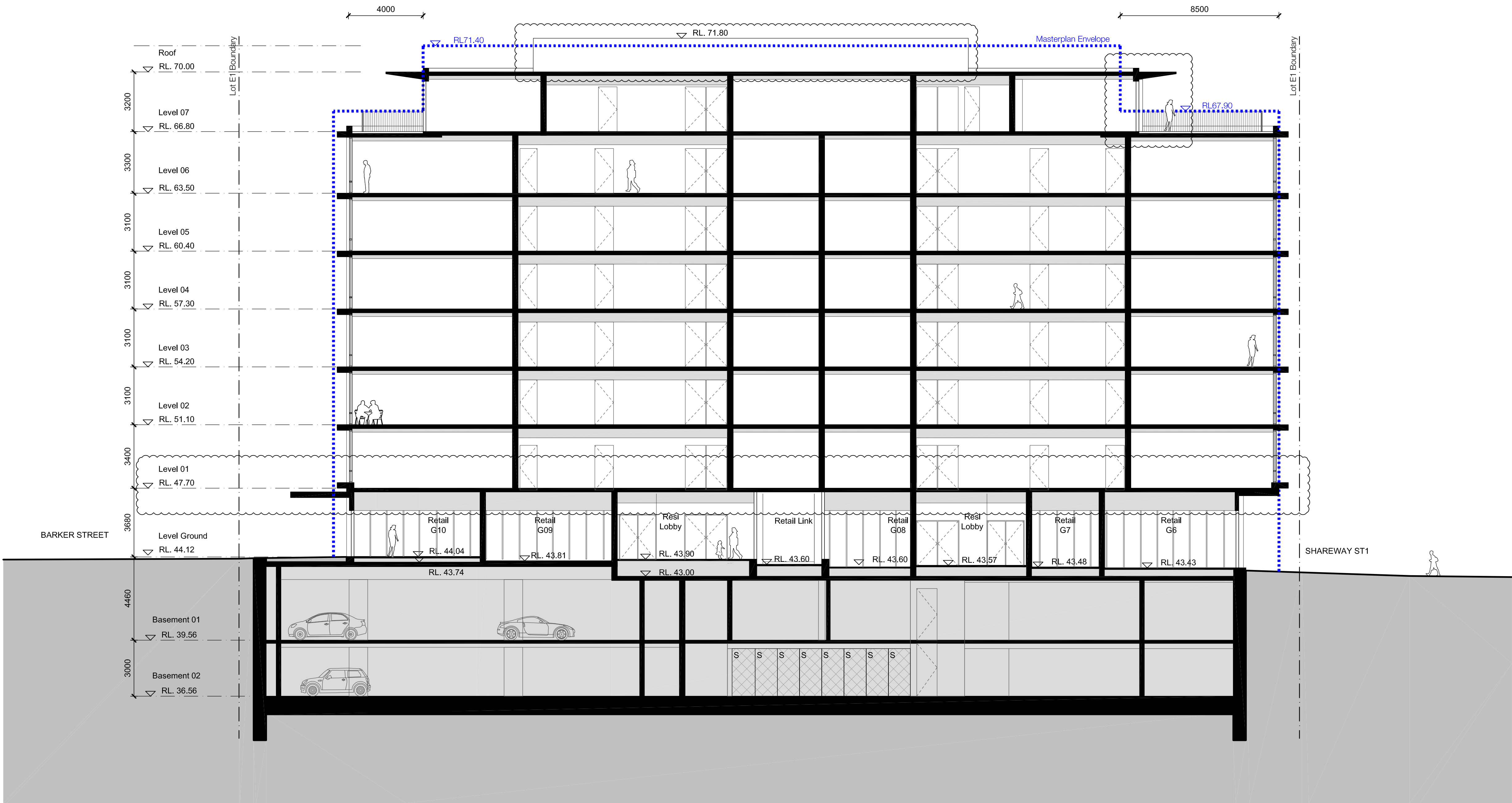
Bates Smart Architects Pty Ltd ABN 68 094 740 986

Lot E1, Newmarket Green
Barker Street Randwick NSW

Section
AA

Scale	1:125@A1, 1:250@A3
Drawn	CV
Checked	CP
Project No.	S11950.b
Status	DA Issue
Plot Date	31/10/2017 10:41 AM
Plot File	S:\11900-11999\11950_b_chus_e1\70_CAD\Plots\DA\DA.E1.08...
Drawing No.	[Revision]

DA.E1.08.001[E]



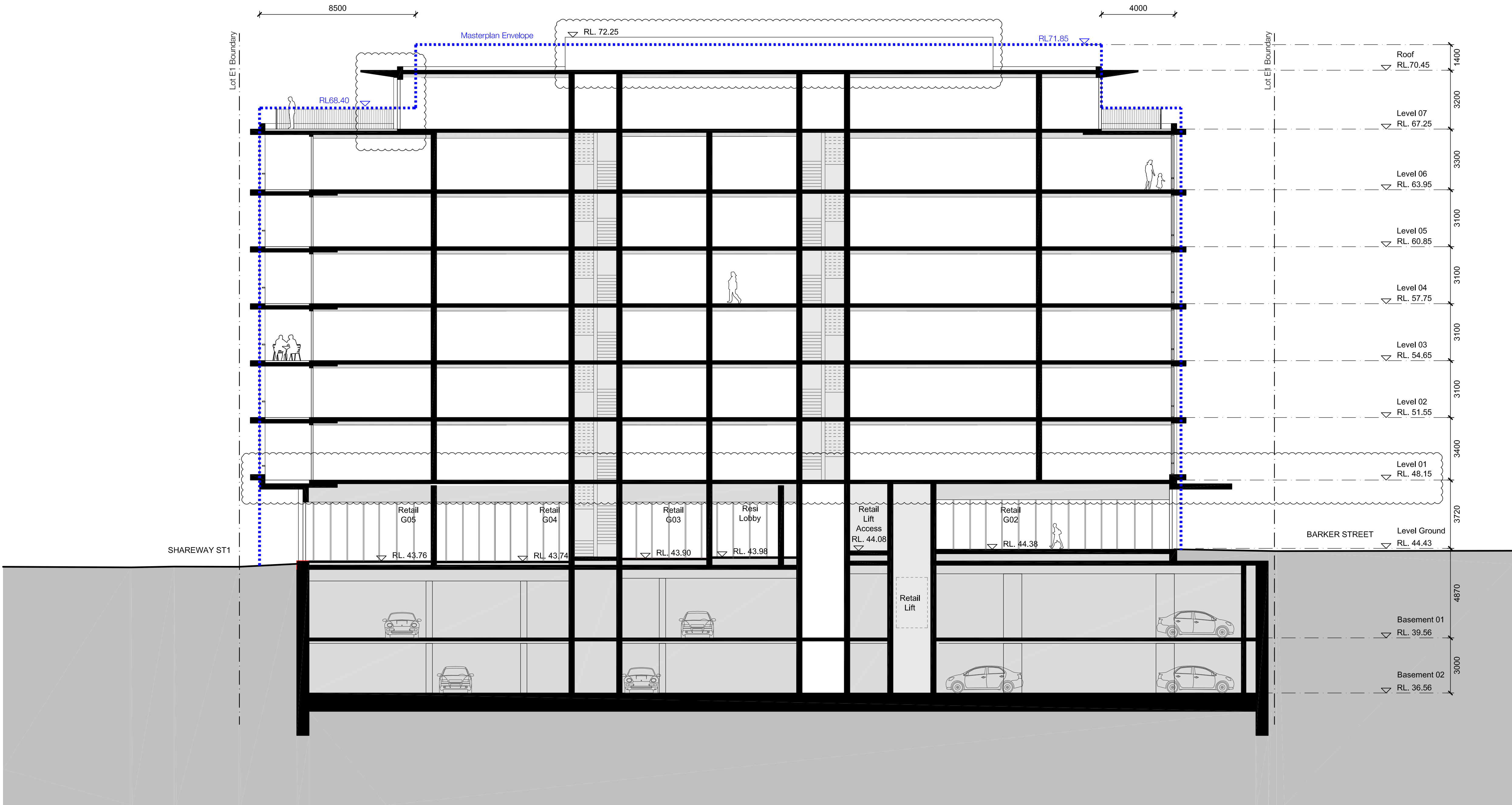
1 Section AA
E1.1 1:125

Check all dimensions and site conditions prior to commencement of any work, the purchase or ordering of any materials, fittings, plant, services or equipment and the preparation of shop drawings and/or the fabrication of any components.

All drawings to be read in conjunction with all architectural documents and all other consultants documents.

Do not scale drawings - refer to figured dimensions only. Any discrepancies shall immediately be referred to the architect for clarification.

All drawings may not be reproduced or distributed without prior permission from the architect.



1 Section BB
E1.2 1:125

SECTION 96
DEVELOPMENT APPLICATION
DA/664/2016/A
Randwick City Council
12 April 2018
Records Received

E	30.10.17	Section 96 issue	CV	KB
D	11.08.17	Development Application	CV	KB
C	26.05.17	Development Application	CV	KB
B	19.04.17	DEP drawing issue	CV	KB
A	16.09.16	Development Application	CV	CP
Revision Date		Description	Initial	Checked

Project

BATESSMART

Melbourne 1 Nicholson Street
Melbourne VIC 3000 Australia
T 03 8664 6200 F 03 8664 6300
http://www.batesmart.com.au

Sydney 43 Brisbane Street
Surry Hills NSW 2010 Australia
T 02 8354 5100 F 02 8354 5199
http://www.batesmart.com.au

Bates Smart Architects Pty Ltd ABN 68 094 740 986

Lot E1, Newmarket Green
Barker Street Randwick NSW

Section
BB

Scale	1:125@A1, 1:250@A3
Drawn	CV Checked CP
Project No.	S11950.b
Status	DA Issue
Plot Date	31/10/2017 10:41 AM
Plot File	S:\11900-11999\11950_b_chus_e1\70_CAD\Plots\DA\DA.E1.08... ..._002[E].dwg
Drawing No.	[Revision]

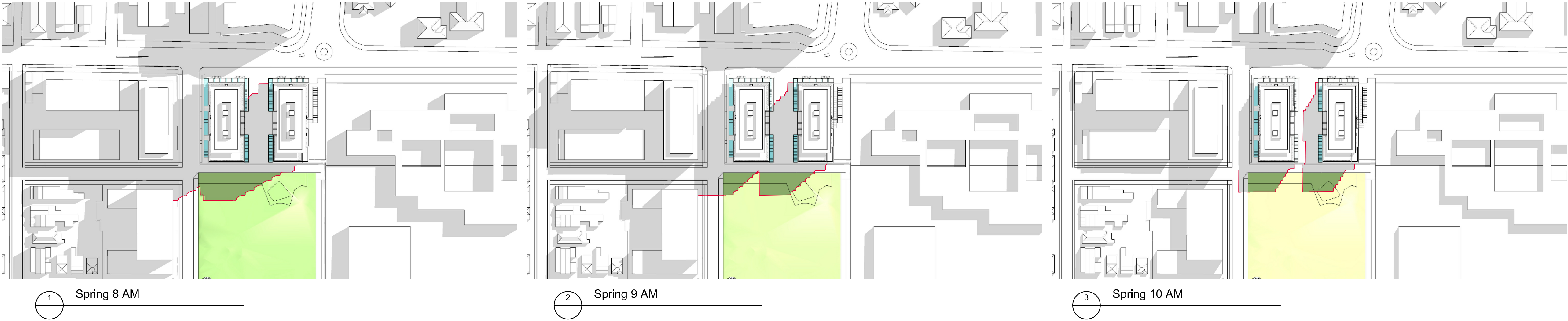
DA.E1.08.002[E]

Check all dimensions and site conditions prior to commencement of any work, the purchase or ordering of any materials, fittings, plant, services or equipment and the preparation of shop drawings and/or the fabrication of any components.

All drawings to be read in conjunction with all architectural documents and all other consultants documents.

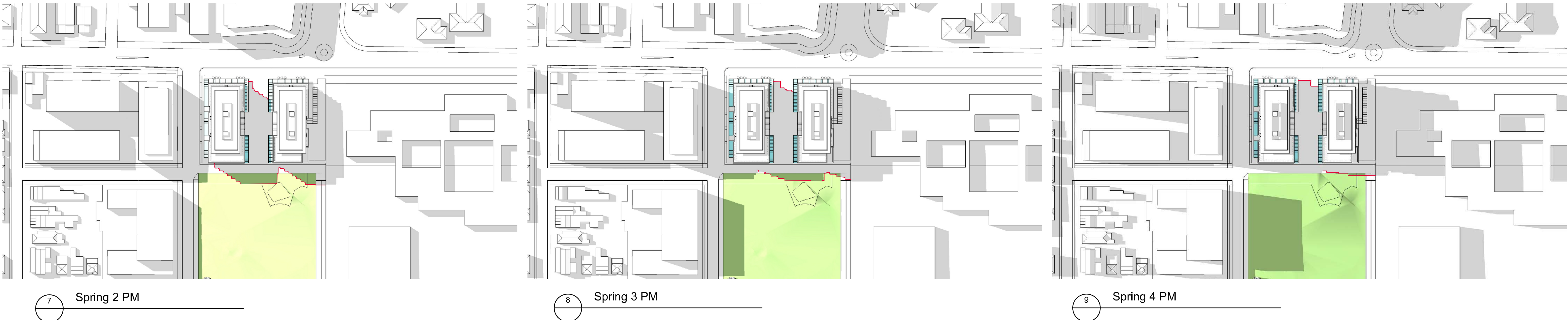
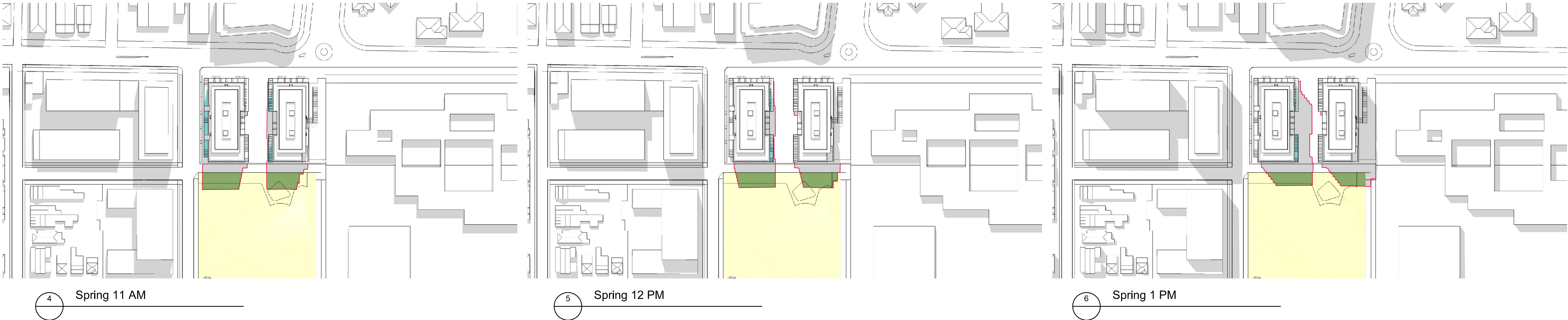
Do not scale drawings - refer to figured dimensions only. Any discrepancies shall immediately be referred to the architect for clarification.

All drawings may not be reproduced or distributed without prior permission from the architect.



**SECTION 96
DEVELOPMENT APPLICATION
DA/664/2016/A**

**Randwick City Council
12 April 2018
Records Received**



D	30.10.17	Section 96 issue	CV	KB
C	28.05.17	Development Application	CV	KB
B	19.04.17	DEP drawing issue	CV	KB
A	16.09.16	Development Application	CV	CP
Revision	Date	Description	Initial	Checked

Project

BATESSMART

Melbourne 1 Nicholson Street
Melbourne VIC 3000 Australia
T 03 8664 6200 F 03 8664 6300
http://www.batesSMART.com.au

Sydney 43 Brisbane Street
Surry Hills NSW 2010 Australia
T 02 8354 5100 F 02 8354 5199
http://www.batesSMART.com.au

Bates Smart Architects Pty Ltd ABN 68 094 740 986

**Lot E1, Newmarket Green
Barker Street Randwick NSW**

Shadow Diagrams Plan Spring Equinox	
Scale	NTS
Drawn	CV
Project No.	S11950.b
Status	DA Issue
Plot Date	31/10/2017 10:41 AM
Plot File	S:\11900-11999\11950_b_cbus_e1\70_CAD\Plots\DA\DA.E1.09...
Drawing No.	...
[Revision]	

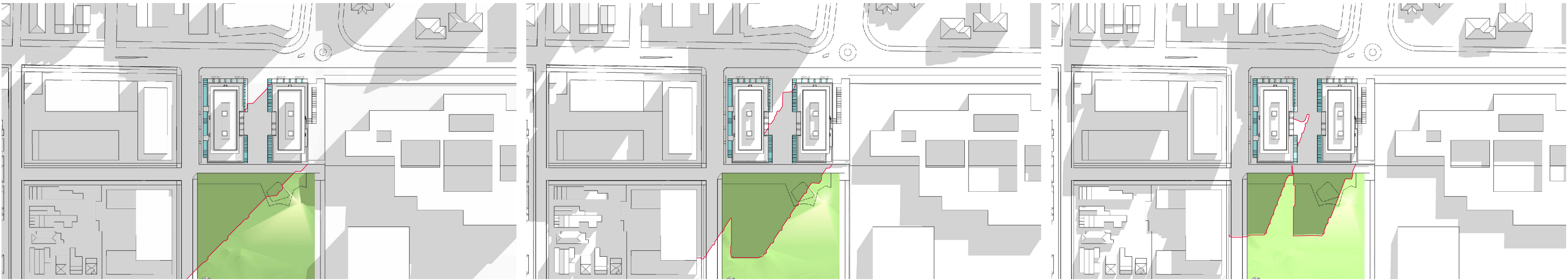
DA.E1.09.002[D]

Check all dimensions and site conditions prior to commencement of any work, the purchase or ordering of any materials, fittings, plant, services or equipment and the preparation of shop drawings and/or the fabrication of any components.

All drawings to be read in conjunction with all architectural documents and all other consultants documents.

Do not scale drawings - refer to figured dimensions only. Any discrepancies shall immediately be referred to the architect for clarification.

All drawings may not be reproduced or distributed without prior permission from the architect.



1 Winter 8 AM

2 Winter 9 AM

3 Winter 10 AM



4 Winter 11 AM

5 Winter 12 PM

6 Winter 1 PM



7 Winter 2 PM

8 Winter 3 PM

9 Winter 4 PM

Extent of shadow from previous scheme

SECTION 96
DEVELOPMENT APPLICATION
DA/664/2016/A
Randwick City Council
12 April 2018
Records Received

D	30.10.17	Section 96 issue	CV	KB
C	28.05.17	Development Application	CV	KB
B	19.04.17	DEP drawing issue	CV	KB
A	16.09.16	Development Application	CV	CP
Revision	Date	Description	Initial	Checked
Project				

BATESSMART

Melbourne 1 Nicholson Street
Melbourne VIC 3000 Australia
T 03 8664 6200 F 03 8664 6300
http://www.batesSMART.com.au

Sydney 43 Brisbane Street
Surry Hills NSW 2010 Australia
T 02 8354 5100 F 02 8354 5199
http://www.batesSMART.com.au

Bates Smart Architects Pty Ltd ABN 68 094 740 986

Lot E1, Newmarket Green
Barker Street Randwick NSW

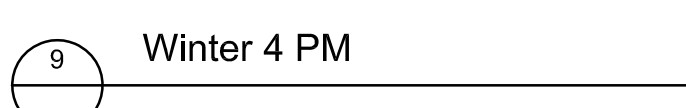
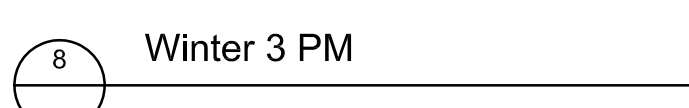
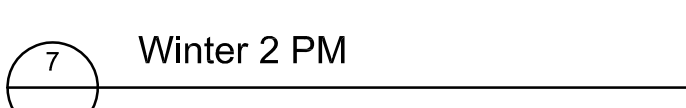
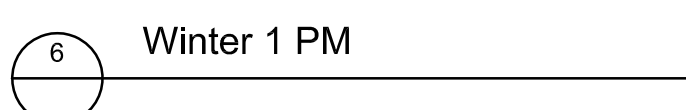
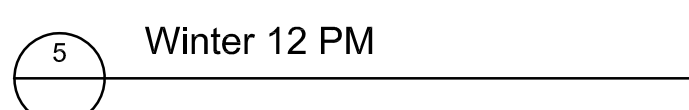
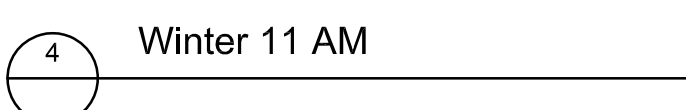
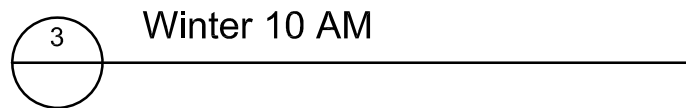
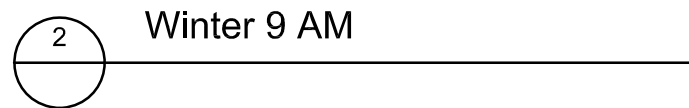
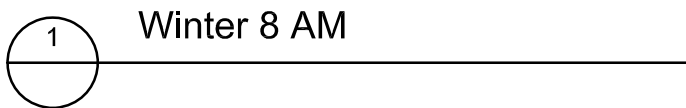
Shadow Diagrams
Plan
Winter Solstice



Scale	NTS		
Drawn	CV	Checked	CP
Project No.	S11950.b		
Status	DA Issue		
Plot Date	31/10/2017 10:41 AM		
Plot File	S:\11900-11999\11950_b_cbus_e1\70_CAD\Plots\DA\DA.E1.09... ..._001[D].dwg		
Drawing No.	[Revision]		

DA.E1.09.001[D]

All drawings may not be reproduced or distributed without prior permission from the architect.



Randwick City Council
12 April 2018
Records Received

Project

Bates Smart Architects Pty Ltd ABN 68 094 740 986

Scale	NTS		
Drawn	CV	Checked	CP
Project No.	S11950.b		
Status	DA Issue		
Plot Date	3/10/2017 10:46 AM		
Plot File	S:\11900-11999\p11950.b_cbus_e1070_CAD\Plots\DA\DA.E1.09...003.dwg		
Drawing No.	[Revision]		

DA.E1.09.003[D]